

Assessing the performance of multi-sources gridded data to estimate long-term rainfall change over north-central region of India

JAVED AKHTER, DEBJYOTI MAJUMDER*, ARGHA DEB and LALU DAS*[#]

Department of Physics, Jadavpur University, Kolkata – 700 032, India

**Department of Agricultural Meteorology and Physics, Bidhan Chandra Krishi Viswavidyalaya, Mohanpur, Nadia – 741 245, India*

(Received 6 July 2017, Accepted 13 February 2020)

[#]email : daslalu@yahoo.co.in

सार – चूंकि देश के अनेक भागों में होने वाले जलवायु परिवर्तन की विश्वसनीयता के आकलन के लिए उस स्थान के आँकड़ों की गुणवत्ता और उपलब्धता पर्याप्त नहीं है, इसलिए उस स्थान के पारम्परिक आँकड़ों के विश्लेषण के साथ बहु स्रोतीय प्रेक्षणीय गिड आँकड़ा समूहों का भी उपयोग किया गया। बहु प्रेक्षणीय गिड आँकड़े (डेटासेट) जैसे भारत मौसम विज्ञान विभाग के गिड आँकड़े, सी.आर.यू., एफ्रोडाइट, जी.पी.सी.सी., एन.सी.ए.आर./एन.ई.पी. का चार मुख्य ऋतुओं (मार्च अप्रैल मई, जून जुलाई अगस्त, सितम्बर अक्टूबर नवम्बर और दिसम्बर जनवरी फरवरी) में उप- उष्ण कटिबंधीय मौनसून जलवायु के क्षेत्र का पुनः विश्लेषण करके 1951 से 2003 तक की अवधि के लिए वार्षिक पैमाने पर, आई. आई. टी. मूवर, उत्तर मध्य भारत (एन. सी. आई.) के साथ तुलना की गई। सी.आर.यू. और एन.सी.ई.पी. को छोड़कर सभी गिड आँकड़े सभी ऋतुओं के साथ-साथ वार्षिक आधार पर भी बेहतर पाए गए। एफ्रोडाइट तथा एन.सी.ई.पी. के पुनः विश्लेषण में सभी ऋतुओं में आर्द्र स्थिति व्यापक रूप से पाई गई। एन.सी.आई. पर वर्षा के आँकड़े प्रति दशक में मार्च अप्रैल मई, जून जुलाई अगस्त सितम्बर, दिसम्बर जनवरी फरवरी ऋतुओं तथा वार्षिक वर्षा में क्रमशः 6.3 मि. मी., 4.2 मि. मी., 1.9 मि. मी. तथा 11.2 मि. मी. की वृद्धि पाई गई, जबकि अक्टूबर नवम्बर ऋतु में प्रति दशक 2.2 मि. मी. की कमी पाई गई। सभी ऋतुओं के लिए समरूपी प्रवृत्ति ग्रहण करने में केवल जी.पी.सी.सी. डेटा सेट सक्षम रहे। एन. सी. ई. पी. के पुनः विश्लेषण का प्रदर्शन शेष सभी की तुलना में सबसे खराब पाया गया। जी.पी.सी.सी. के उच्च वियोजन के आँकड़ों का झुकाव सभी डेटा सेट में सबसे कम पाया गया और अन्य की अपेक्षा बेहतर स्कोर प्राप्त किया। अतः इस क्षेत्र के लिए जलवायु विश्लेषण हेतु प्रत्यक्ष निरीक्षण करने और विभिन्न पारम्परिक उपायों से प्राप्त प्राप्त परिणामों के आधार पर जी.पी.सी.सी. उच्च वियोजन गिड आँकड़े और उच्च वियोजन के भारत मौसम विज्ञान विभाग के गिड आँकड़े विश्वसनीय रूप से उपयोग किए जा सकते हैं।

ABSTRACT. As station data quality and availability is not adequate to reliably estimate observed climate change over many parts of the country, multi sources observational gridded datasets have been employed in the present study. The performances of multi-observational gridded datasets, e.g., IMD gridded data, CRU, APHRODITE, GPCC, NCAR/NCEP reanalysis have been compared with the reference rainfall data from IITM over North central India (NCI), a region of subtropical monsoon climate, during four main seasons (MAM, JJAS, ON and DJF) as well as in annual scale for the period 1951-2003. All the gridded data except CRU and NCEP have secured good skill scores in all seasons as well as at annual scale. APHRODITE and NCEP reanalysis have shown large wet bias in all seasons. The reference rainfall data over NCI has shown 6.3 mm, 4.2 mm, 1.9 mm and 11.2 mm increase per decade for MAM, JJAS, DJF seasons and annual rainfall respectively whereas 2.2 mm decrease per decade has been found for ON season. Only GPCC dataset have been able to capture similar trend for all seasons. Performance of NCEP reanalysis has been worse in compared to others. GPCC and IMD high resolution data has shown smallest bias among all the datasets and also obtain superior skill scores than others. Therefore based on visual inspection and the results from different conventional measures, GPCC high resolution gridded data and high resolution IMD gridded data may be reliably used for climatic analysis of this region.

Key words – Gridded analysis datasets, North-central-India, Seasonal rainfall, Trend analysis, Skill metrics.

1. Introduction

Major parts of North central regions of India are rainfed and agricultural production depends significantly on monsoon as well as annual rainfall which are highly erratic in nature. Thus, under the context of climate

change, it is necessary to assess the amount of past rainfall change using multi sources observational data in order to understand the impact of climate change over agricultural production. Gridded representations of observed data on the basis of a variety of instruments, locations, platforms, retrieval algorithms and analysis schemes are widely

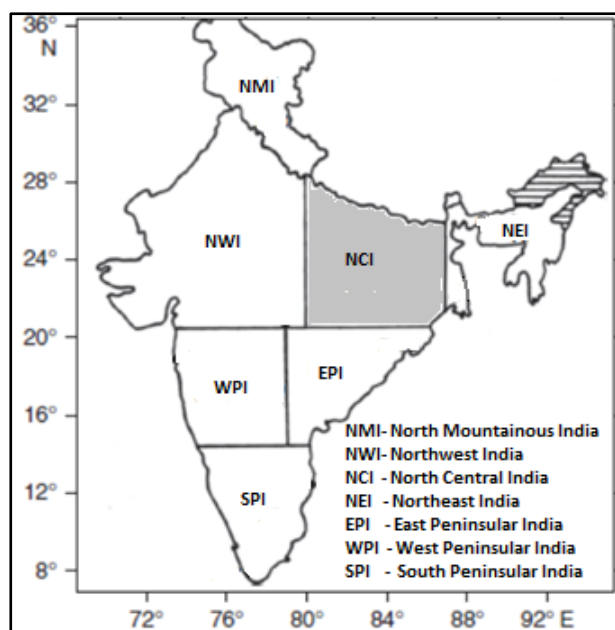


Fig. 1. Figure depicting study region over North Central India. (Adopted from Sontakke *et al.*, 2008). North Central India (NCI) has been shaded with gray

employed in climate research with various goals (Schneider *et al.*, 2014). Typically, only a limited number of such data sets have been available, and most climate studies have employed a single data set which includes the features needed for their analyses. Gridded observational datasets are one of the key ingredients of climatic research for the assessment of climate change of a region as well as for the validation of global climate model (GCM) and regional climate model (RCM) outputs of that region. We have to depend vastly on this datasets as real observations are not available and inadequate in many cases (Kannan *et al.*, 2014). Lack of accurate observations also may be a principal barrier for climate model improvement (Collins *et al.*, 2013). Many researchers and institutions have introduced newly developed observation-based gridded analysis data sets of global or regional coverage with fine spatial resolutions (Adler *et al.*, 2003). Analysis methodology such as the quality control of input data, spatial/temporal interpolation, and retrieval algorithms used in producing these gridded datasets plays a crucial role in determining the characteristics of precipitation climatology represented by individual datasets (Kim *et al.*, 2015). As different data sets are created with different sources of observation and numbers of station data is not uniform, method of analysis are also not unique, so the estimated amount of rainfall change over the North-central region of India (NCI zone) from different data may vary. Therefore, to have a comprehensive idea about the effective use of different gridded datasets, the present study was carried out with the following major objectives:

(i) Assessment of the skills of different sources of gridded analysis data in capturing the observed rainfall using conventional statistical measures over NCI zone.

(ii) Identification of most reliable gridded dataset over this zone.

2. Materials and method

2.1. Study area

Present study has been carried out over North-Central India (NCI) which is one of the seven homogeneous zones identified by Sontakke *et al.* (2008). NCI is portion of the country extending from the latitude of 21° N and between 80° and 88° E and covering 5,99,860 km² area (Fig. 1).

2.2. Data

Two types of datasets have been used in this study- Firstly, area averaged data of NCI zone which is available at Data Archival of IITM website (<http://www.tropmet.res.in/>) has been used as reference data for evaluating performance of different gridded data sources. Longest possible instrumental area-averaged monthly, seasonal and annual rainfall series of NCI zone have been developed by Sontakke *et al.* (2008) using highly quality-controlled data from well spread network of 65 rain gauge stations. The stations used in this data have been provided in Table 1.

Secondly, different global observational gridded datasets *e.g.*, CRU (0.5° × 0.5°), APHRODITE (0.5° × 0.5° and 0.25° × 0.25°), GPCC (2.5° × 2.5°, 1° × 1° and 0.5° × 0.5°), and NCAR/NCEP (2.5° × 2.5°) reanalysis in addition to two versions of observational gridded data from IMD (1° × 1° and 0.25° × 0.25°) whose performances have been evaluated with respect to the reference data. Detailed information regarding sources of these gridded datasets has been provided in Table 2.

2.3. Methodology

Before evaluation, all gridded dataset have been interpolated on station locations shown in Table 1 using bi-linear interpolation technique and area-averaged data prepared using simple arithmetic mean of interpolated data over all stations similar to Sontakke *et al.* (2008). Bi-linear method uses minimum of 4 nearest grid points from the domain and nearby areas to interpolate over each station/point location as recommended by Das *et al.*, 2012. To evaluate the performance of gridded data, initially a visual comparison has been done by plotting time series of gridded data and reference data. Next, skills of the gridded

TABLE 1

Description of stations used in this study

Station	Lat. (°N)	Long. (°E)	Station	Lat. (°N)	Long. (°E)	Station	Lat. (°N)	Long. (°E)
Bankura	23.23	87.07	Dumka	24.27	87.25	Nawabganj	26.9	81.2
Suri	23.92	87.53	Hazaribagh	23.98	85.37	Basti	26.78	82.72
Burdwan	23.23	87.85	Daltonganj	24.05	84.07	Deoria	26.5	83.78
Purulia	23.33	86.38	Ranchi	23.38	85.33	Faizabad	26.78	82.13
Midnapore	22.42	87.32	Chaibasa	22.55	85.82	Fatehpur	25.93	80.83
Bhagalpur	25.25	87	Bilaspur	22.08	82.13	Ghazipur	25.58	83.57
Arrah	25.57	84.67	Durg	21.22	81.28	Gonda	27.13	81.93
Jamui	24.93	86.22	Raigarh	21.92	83.4	Gorakhpur	26.75	83.37
Motihari	26.67	84.92	Raipur	21.23	81.65	Hamirpur	25.95	80.13
Darbhanga	26.17	85.9	Ambikapur	23.12	83.2	Hardoi	27.4	80.13
Gaya	24.75	84.95	Balaghat	21.8	80.2	Jaunpur	25.75	82.68
Madhipura	25.92	86.78	Mandla	22.6	80.38	Kanpur	26.47	80.35
Muzaffarpur	26.12	85.4	Panna	24.72	80.2	Kheri	27.9	80.8
Patna	25.62	85.17	Rewa	24.53	81.3	Lucknow	26.85	80.93
Purnea	25.77	87.47	Satna	24.57	80.83	Mirzapur	25.15	82.58
Chapra	25.78	84.73	Sohagpur	23.32	81.35	Pratapgarh	25.9	81.95
Balasore	21.5	86.93	Sidhi	24.4	81.88	Rae Bareli	26.23	81.23
Keonjhar	21.63	85.58	Allahabad	25.47	81.83	Sitapur	27.57	80.68
Baripada	21.95	86.73	Azamgarh	26.05	83.18	Sultanpur	26.27	82.08
Sambalpur	21.47	83.97	Bahraich	27.57	81.6	Unnao	26.53	80.5
Rajgangpur	22.18	84.6	Ballia	25.73	84.17	Varanasi	25.33	83
Gobindpur	23.83	86.53	Banda	25.48	80.35			

Lat. : Latitude; Long. : Longitude

dataset have been evaluated through skill scores developed by Taylor (2001). Firstly, skill score-1 have been defined as,

$$SS1 = \frac{4(1+R)}{(SDR + \frac{1}{SDR})^2 (1+R_0)} \quad (1)$$

and secondly, skill score-2 defined as,

$$SS2 = \frac{4(1+R)^4}{(SDR + \frac{1}{SDR})^2 (1+R_0)^4} \quad (2)$$

R is the correlation coefficient between two data; SDR is the ratio of the standard deviations in each data. We assumed that $R_0 = 1$, as each gridded contains single simulation.

Performances of the gridded data have been also assessed through comparing linear trends and percentage bias. Linear trends have been fitted using linear regression.

TABLE 2

Source and resolution of gridded datasets used in this study

Datasets	Source	Resolution
IMD-low (IMD-L)	India Meteorological Department	$1^\circ \times 1^\circ$
IMD-high (IMD-H)	India Meteorological Department	$0.25^\circ \times 0.25^\circ$
Aphrodite-high (APHRO-H)	University of Tsukuba, Japan Meteorological Agency	$0.25^\circ \times 0.25^\circ$
Aphrodite-low (APHRO-L)	University of Tsukuba, Japan Meteorological Agency	$0.5^\circ \times 0.5^\circ$
NCEP	NCEP-NCAR, USA	$2.5^\circ \times 2.5^\circ$
GPCC-low (GPCC-L)	Deutscher Wetterdienst (DWD), Germany	$2.5^\circ \times 2.5^\circ$
GPCC-medium (GPCC-M)	Deutscher Wetterdienst (DWD), Germany	$1^\circ \times 1^\circ$
GPCC-high (GPCC-H)	Deutscher Wetterdienst (DWD), Germany	$0.5^\circ \times 0.5^\circ$
CRU	Climatic Research Unit, UK	$0.5^\circ \times 0.5^\circ$

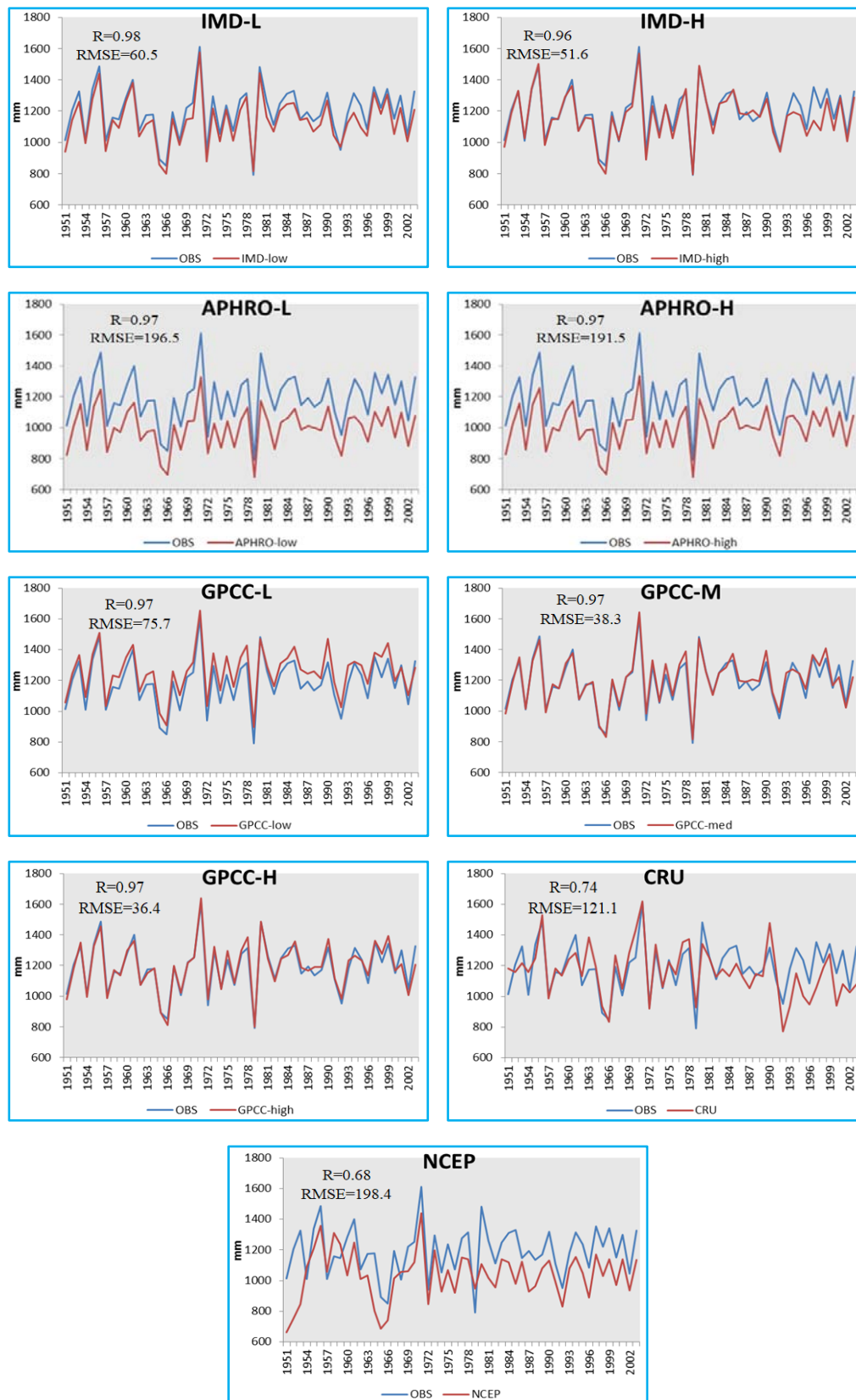


Fig. 2. Visual comparison of annual time series of various gridded data sets with IITM observed data during 1951-2003. Correlation(R) and root mean square error (RMSE) have been mentioned in the plot

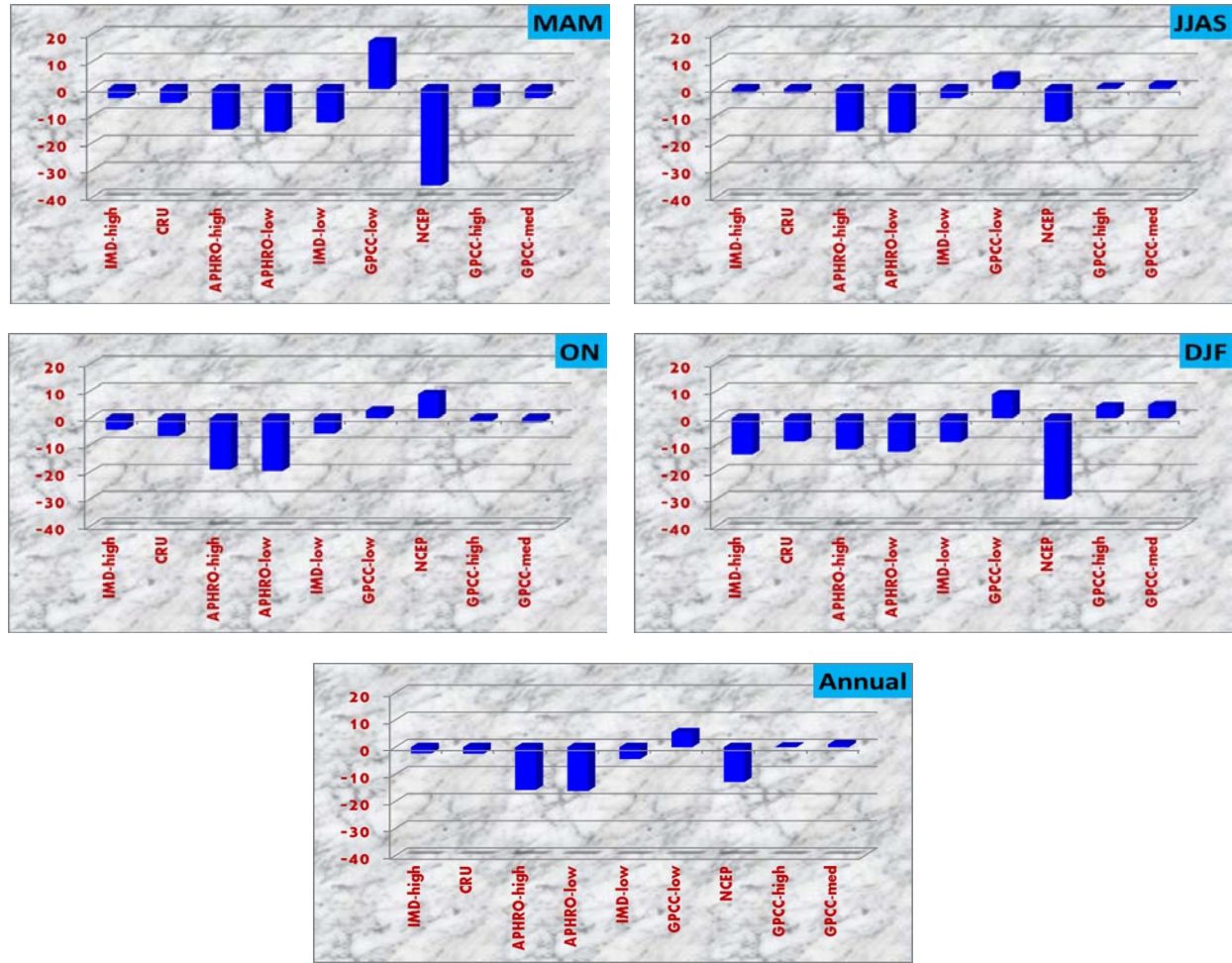


Fig. 3. Seasonal and annual percentage bias of various gridded datasets with respect to IITM observed data during 1951-2003

Percentage bias (PB) has been calculated as:

$$PB = \sum_{i=1}^N \frac{(m_i - o_i)}{o_i} \times 100\% \quad (3)$$

Here, m_i and o_i indicate i^{th} value of each data. The optimal value of PB is 0.0, with low-magnitude values indicating better performance.

3. Results and discussion

In the present study, the analyses have been carried out for four seasons *i.e.*, pre-monsoon (MAM), Monsoon (JJAS), Post-monsoon (ON), Winter (DJF) as well as annual scale during 1951-2003. The results have been discussed in the following sub-sections.

3.1. Visual comparison of time series over NCI

How the different global gridded data have been able to reproduce the temporal variation of annual rainfall

during 1951-2003 period over the study domain have been compared in Fig. 2. Visual comparison has indicated that the GPCC-H, GPCC-M and IMD high and low resolution data have shown higher accuracy to reproduce the time series of reference data for the period of 1951-2003. APHRODITE (both low and high resolution) and NCEP data have underestimated the reference rainfall series over this zone. Therefore, APHRODITE and NCEP data may not be much reliable over NCI zone. These visual impressions have been further verified using different statistical metrics in the subsequent sections.

3.2. Percentage bias of analysis datasets

Percentage bias as defined by the equation (3) in section 2.3 has been calculated for all other gridded datasets and the results have been shown in Fig. 3. In the case of pre-monsoon season, all gridded data except GPCC-low have shown dry biases among which maximum amount of dry bias (~40%) have been found for

TABLE 3

Skill score 1 of various gridded datasets during 1951-2003

Datasets	MAM	JJAS	ON	DJF	Annual
IMD-H	0.98	0.98	0.99	0.97	0.98
IMD-L	0.97	0.98	0.99	0.99	0.99
CRU	0.95	0.84	0.93	0.88	0.87
APHRO-H	0.96	0.95	0.93	0.98	0.96
APHRO-L	0.96	0.94	0.93	0.97	0.95
NCEP	0.71	0.81	0.84	0.83	0.84
GPCC-H	0.99	0.98	0.99	0.99	0.99
GPCC-L	0.99	0.97	0.98	0.99	0.98
GPCC-M	0.99	0.98	0.99	0.99	0.99

TABLE 4

Skill score 2 of various gridded datasets during 1951-2003

Datasets	MAM	JJAS	ON	DJF	Annual
IMD-H	0.93	0.92	0.96	0.92	0.93
IMD-L	0.92	0.95	0.97	0.95	0.96
CRU	0.82	0.53	0.8	0.73	0.58
APHRO-H	0.94	0.9	0.91	0.94	0.93
APHRO-L	0.93	0.89	0.91	0.94	0.92
NCEP	0.25	0.43	0.62	0.58	0.5
GPCC-H	0.98	0.93	0.98	0.96	0.95
GPCC-L	0.96	0.92	0.95	0.95	0.94
GPCC-M	0.98	0.94	0.97	0.96	0.95

NCEP. During the monsoon season, APHRO high and low data along with NCEP data have shown relatively large dry biases whereas no significant biases have been found for other gridded datasets. Again no significant biases have been observed during the post monsoon except APHRO high and low. However, during the winter season mostly all the data except GPCC low has shown a dry bias among which NCEP has shown largest dry bias (~30%). Overall in annual scale, it has been seen that APHRO high and low along with NCEP datasets have shown significant dry bias whereas negligible biases have been found for other datasets (Fig. 3).

3.3. Comparison of skill scores among various analysis datasets

Apart from checking the bias within data, two different types of skill scores (SS1 and SS2) as defined in section 2.3 have been calculated for all gridded data for four seasons (pre-monsoon, monsoon, post monsoon and winter) along with annual scale and the results have been compared in Tables 3 and 4. During the pre-monsoon season, it has been revealed that both the high and medium resolution GPCC data have shown better performance as estimated through their higher skill scores (SS1 = 0.99; SS2 = 0.98) whereas, NCEP data has shown worst performance with SS1 = 0.71 and SS2 = 0.25 (Tables 3 and 4). In addition to GPCC data, both high and low resolution gridded data from IMD have also shown higher SS1 (0.97-0.98) and SS2 (0.92-0.93) values, indicating their superior skills. Therefore, it is to be mentioned that IMD gridded data may be used as an efficient indigenous alternative source in addition to GPCC. Similarly, during monsoon IMD (High and Low) and GPCC (Low, medium and high) have shown higher skills whereas, NCEP and CRU data have obtained less

reliability as their estimated skill scores have been worst (Tables 3 and 4). In case of post monsoon, all the gridded data except NCEP (SS1 = 0.84; SS2 = 0.62) and CRU (SS1 = 0.93; SS2 = 0.80) performed consistently well as estimated SS1 and SS2 have been above 0.93 and 0.91, respectively. Similar results have been found over dry winter season also. Finally based overall analysis of skill scores on all seasons and annual scale, it has been found all gridded data has performed satisfactorily except NCEP and CRU.

3.4. Linear trend analysis over NCI

Linear trend analysis has revealed that the reference dataset has shown significant (at 10% level) increasing trend during pre-monsoon at the rate of 6.30 mm/decade. APHRO high and low and all three GPCC data have been able to reproduce the magnitude of trend close to reference data (Table 5). However, APHRO high and low has shown significant increasing trend at 5% level. All other datasets have shown non-significant increasing trend except NCEP (which has shown a declining trend ~3.37 mm/decade). During wet monsoon season, IMD-low and all three types of GPCC data showed non-significant increasing trend similar to that of reference data (4.18 mm/decade). It is noteworthy that, abrupt significant declining trend has been observed for CRU gridded data (30.5 mm/year) which closely resemble to the findings by Meena *et al.* (2015). Some observational studies using station data have also revealed decreasing trend during monsoon over some pockets of this zone (Kishore *et al.*, 2016; Guhathakurta *et al.*, 2015; Guhathakurta and Rajeevan, 2008). However, Dubey and Krishnakumar (2014) have not found any significant trend in seasonal monsoon rainfall over central India. During the post monsoon season, however all the gridded datasets

TABLE 5

Trends (mm/decade) of reference data and various gridded data during 1951-2003

Period	Ref. Data	IMD-high	IMD-low	CRU	APHRO-high	APHRO-low	NCEP	GPCC-high	GPCC-low	GPCC-med
MAM	6.30*	3.69	3.3	2.59	6.19**	6.23**	-3.37	5.15*	5.63*	5.34*
JJAS	4.18	-1.78	4.04	-30.46*	-1.15	-0.69	17.43	4.46	3.54	4.97
ON	-2.18	-2.08	-2.08	-2.14	-1.18	-1.14	-5.89	-0.51	-0.48	-0.38
DJF	1.9	-0.23	0.62	-0.57	1.99	2.05	-1.13	3.07	3.01	3.13
Ann	10.19	-0.39	5.88	-30.58*	5.86	6.45	7.04	12.18	11.7	13.06

*-significant at 10% level; **'- significant at 5% level; ***'- significant at 1% level

have been able to reproduce the declining trend found for reference data (2.18 mm/decade). During the dry period of winter season, all datasets have revealed non-significant positive trends similar to reference data (1.90 mm/decade) except IMD-high, CRU and NCEP. The reference data have shown non-significant increasing trend for annual rainfall at the rate of 10.19 mm/decade. All three versions of GPCC data have been able to reproduce both magnitude and direction of trend. All other datasets have shown increasing trend with smaller magnitude except IMD high and CRU. Overall, comparing all the datasets for both seasonal and annual scale it has been found that three versions of GPCC and IMD-low has consistently performed well to capture the trend shown by reference data.

On the basis of visual comparison, skill scores and trend analysis, it has been found that GPCC data has been more reliable data among different datasets. On the other hand, CRU and NCEP data have been emerged as less skilful datasets. Our findings are in line with Satya Prakash *et al.* (2014, 2015) where they have put more confidence on GPCC dataset over Indian domain as well as over global land region. They have also found poor performance of NCEP dataset compared to others. Satya Prakash *et al.* (2014) have reported that APHRODITE data have similar skill of GPCC dataset over Indian domain but present study have indicated large biases in APHRODITE data for various seasons over NCI.

4. Conclusions

In the present study, different types of gridded datasets have been evaluated with respect to reference data of NCI zone through visual comparison and various statistical measures. The findings of the study have been as following:

(i) Visual impressions have put more confidence on GPCC-H, GPCC-M and IMD high and low resolution data and less confidence on APHRODITE & NCEP data.

(ii) All gridded data except CRU and NCEP have obtained good skill scores in all seasons as well as at annual scale.

(iii) NCEP, Aphrodite data have shown large biases in all cases. GPCC high and medium resolution data have shown least biases.

(iv) All three versions of GPCC and IMD-low resolution data have consistently captured the observed trend in all seasons as well as at annual scale. CRU data has shown unrealistic trend values in JJAS and annual.

Overall, it has been found that NCEP data has been the least reliable data in simulating observed rainfall over NCI region. GPCC data especially the high and medium resolution data have been found to be more reliable for this region in every aspects tested in this study. Resolution-wise IMD high-resolution and APHRODITE data are the highest resolution data among all; IMD high has performed well except capturing observed trends but performance of APHRODITE high has not been satisfactory. Therefore, for high-resolution rainfall analysis, IMD high-resolution gridded data may be recommended.

Acknowledgements

The first author (JA) likes to acknowledge to the Department of Science and Technology (DST), Govt. of India for providing financial support through INSPIRE fellowship (IF150304) and the Department of Agricultural Meteorology and Physics, BCKV for providing necessary facilities to carry out this research work. The authors are also thankful to Indian Institute of tropical Meteorology (Pune) for providing free data for North Central zone. University of Tsukuba, NCEP-NCAR (USA), Deutscher Wetterdienst (DWD) Germany and Climatic Research Unit (UK) are also acknowledged for providing gridded data. We are also grateful to India Meteorological Department for providing IMD high and low-resolution gridded data.

The contents and views expressed in this research paper/article are the views of the authors and do not necessarily reflect the views of the organizations they belong to.

References

- Adler, R. F., Huffman, J. G., Chang, A., Ferraro, R., Xie, P. P., Janowiak, J., Rudolf, B., Schneider, U., Curtis, S., Bolvin, D., Gruber, A., Susskind, J., Arkin, P. and Nelkin, E., 2003, "The Version 2 Global Precipitation Climatology Project (GPCP) monthly precipitation analysis (1979-present)", *Journal of Hydrometeorology*, **4**, 1147-1167.
- Collins, M., Achuta Rao, K., Ashok, K., Bhandari, S., Mitra, A. K., Prakash, S., Srivastava, R. and Turner, A., 2013, "Observational Challenges in Evaluating Climate Models", Correspondence section, *Nature Climate Change*, **3**, 11, 940-941, doi:10.1038/nclimate2012.
- Das, L., Annan, J. D., Hargreaves, J. C. and Emori, S., 2012, "Improvements over three generations of climate model simulations for eastern India", *Climate Research*, **51**, 201-216.
- Dubey, D. P. and Krishnakumar, G., 2014, "Trends in precipitation extremes over Central India", *Mausam*, **65**, 1, 103-108.
- Guhathakurta, P., Rajeevan, M., Sikka, D. R. and Tyagi, A., 2015, "Observed changes in southwest monsoon rainfall over India during 1901-2011", *International Journal of Climatology*, **35**, 8, 1881-1898. doi:10.1002/joc.4095.
- Guhathakurta, P. and Rajeevan, M., 2008, "Trends in the rainfall pattern over India", *International Journal of Climatology*, **28**, 11, 1453-1469. doi:10.1002/joc.1640.
- Kannan, S., Ghosh, S., Mishra, V. and Salvi, K., 2014, "Uncertainty resulting from multiple data usage in statistical downscaling", *Geophysical Research Letter*, **41**, 4013-4019.
- Kim, J., Sanjay, J., Mattmann, C., Boustani, M., Ramarao, M. V. S., Krishnan, R. and Waliser, D., 2015, "Uncertainties in estimating spatial and interannual variations in precipitation climatology in the India-Tibet region from multiple gridded precipitation datasets", *International Journal of Climatology*, **35**, 4557-4573.
- Kishore, P., Jyothi, S., Basha, G., Rao, S. V. B., Rajeevan, M., Velicogna, I. and Sutterley, T. C., 2016, "Precipitation climatology over India: validation with observations and reanalysis datasets and spatial trends", *Climate Dynamics*, **46**, 1&2, 541-556. doi:10.1007/s00382-015-2597-y.
- Meena, P. K., Khare, P. K., Shukla, R. and Mishra, P. K., 2015, "Long Term Trend Analysis of Mega Cities in Northern India using Rainfall Data", *Indian Journal of Science and Technology*, **8**, 3, 247-253.
- Prakash, S., Gairola, R. M. and Mitra, A. K., 2014, "Comparison of large-scale global land precipitation from multisatellite and reanalysis products with gauge-based GPCP data sets", *Theoretical and Applied Climatology*, **121**, 1&2, 303-317. doi:10.1007/s00704-014-1245-5.
- Prakash, S., Mitra, A. K., Momin, I. M., Rajagopal, E. N., Basu, S., Collins, M., Turner, A. G., Achuta Rao, K. and Ashok, K., 2015, "Seasonal intercomparison of observational rainfall datasets Over India during the southwest monsoon season", *International Journal of Climatology*, **35**, 9, 2326-2338. doi: 10.100200c.4129.
- Schneider, U., Becker, A., Finger, P., Meyer, C. A., Ziese, M. and Rudolf, B., 2014, "GPCC's new land surface precipitation climatology based on quality-controlled *in situ* data and its role in quantifying the global water cycle", *Theoretical and Applied Climatology*, **115**, 15-40.
- Sontakke, N. A., Singh, N. and Singh, H. N., 2008, "Instrumental period rainfall series of the Indian region [AD 1813-2005]: Revised reconstruction, update and analysis", *Holocene*, **18**, 7, 1055-1066.
- Taylor, K. E., 2001, "Summarizing multiple aspects of model performance in single diagram", *Journal of Geophysical Research*, **106**, 7183-7192.