

## Letter To The Editor

551.508.5

### A SIMPLE ARRANGEMENT FOR AUTOMATICALLY LIFTING OFF THE PEN OF DINES PRESSURE TUBE ANEMOGRAPH

In order to study in detail the wind structure at the time of onset of seabreeze, squalls and similar phenomena, one of the Dines' Anemographs at Poona was fitted with a *quick run* clock drum making a complete revolution in about two hours. Ordinarily, the observer has personally to attend to remove the chart put on *within 2 hours* of its setting. It was worthwhile to avoid this trouble, because the chart had often to be removed at odd times of the day. A simple arrangement was, therefore, devised to lift off the pens automatically after one complete revolution of the drum.

The arrangement consists of a cam C (Fig. 1) which is fixed in the vertical rod provided on the anemograph to lift off the pens P. The cam is fixed with a set screw and its height and position on the lifting rod can be adjusted. In the position of the rod when it is nearest the drum and the pens are recording, the cam is projecting just below the base of the drum. When one complete revolution has been made by the drum, the projection of the long spring clip R holding the chart on the drum engages against the cam and moves it away, thus lifting off the pens. One has, however, to see that the metal plate on which the rod is fixed moves without friction about the screw S. This arrangement has been found to work quite satisfactorily with the anemograph. It can also be adapted for use with all other types of meteorological instruments with clock drums.

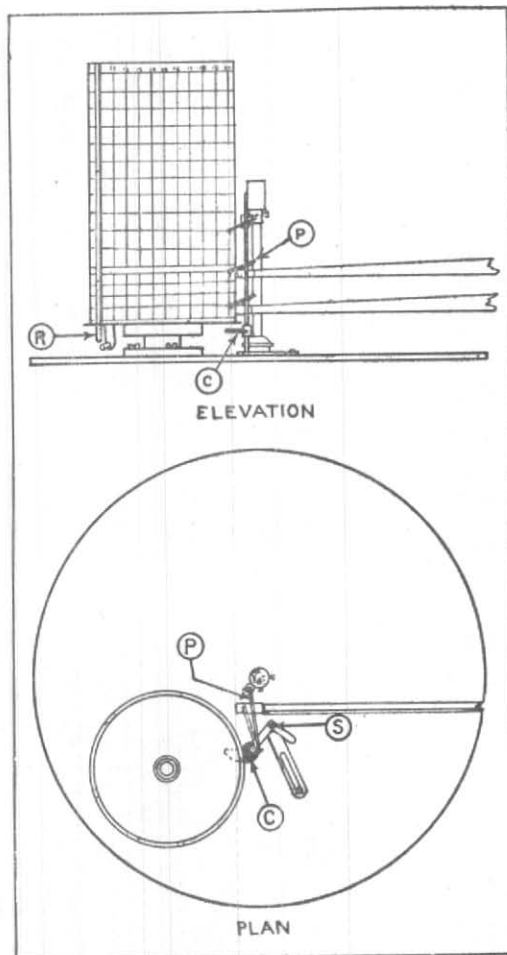


Fig. 1

N. NARAYANA IYER

Meteorological Office,  
Poona  
January 23, 1953.